

When the business partners began planning for the construction of their new upscale Thai restaurant - located in the historic Mandel lofts in downtown Los Angeles - they wanted to use only the best materials and equipment available. After



Upscale Thai restaurant Soi 7 is located in the historic Mandel lofts in downtown Los Angeles.

researching and reviewing their options, they decided the Noritz commercial water heaters would be the ideal choice for their water heating needs. The Noritz unit met all local city code requirements and was also a space saving solution. For the owners, the unit's energy efficiency was the deciding factor due to the unit's on-demand system and modulating capability, which only uses the energy necessary to heat the water that is used.

Another benefit of the Noritz system is that they are modular, which allows the owners to add more

units in the future if they ever need to expand or purchase larger kitchen equipment. Noritz commercial units can be linked up to 24 units with a single system controller. And with its space saving design, it will not be an issue when installing additional units.



One of two commercial dishwashers in the restaurant requiring 4 GPM each @ 160-degree F.

The restaurant's 90-guest seating capacity in the dining area.



The restaurant's 90-guest seating capacity in the dining area.



Two NC380-SV-ASME installed outside of the restaurant.

Property profile

Location: Soi 7

City: Los Angeles

Max. Occupancy: 90 guests

Installer: Chupina Plumbing

Noritz installation

Location: Outdoor installation, back of the restaurant.

Applications: 7 kitchen sinks, 2 dishwashers, and 3 restrooms.

Vent set-up: Outdoor vent cap (VC-132)

Noritz heater profile

Noritz units: Two NC380-SV-ASME

Noritz accessories:
Isolator valves (IK-WV-9-TH) &
Quick-Connect cable (QC-1)

Fuel type: Natural gas

Gas consumption:
Max. 380,000 btuh – Min. 22,500 btuh

Flow rate performance: 0.7 – 13.2 GPM

Temperature settings: 100-180° F

Warranty: 5 years on heat exchanger and parts (non-prorated)



Model NC380-SV-ASME Commercial Water Heater Specification Sheet

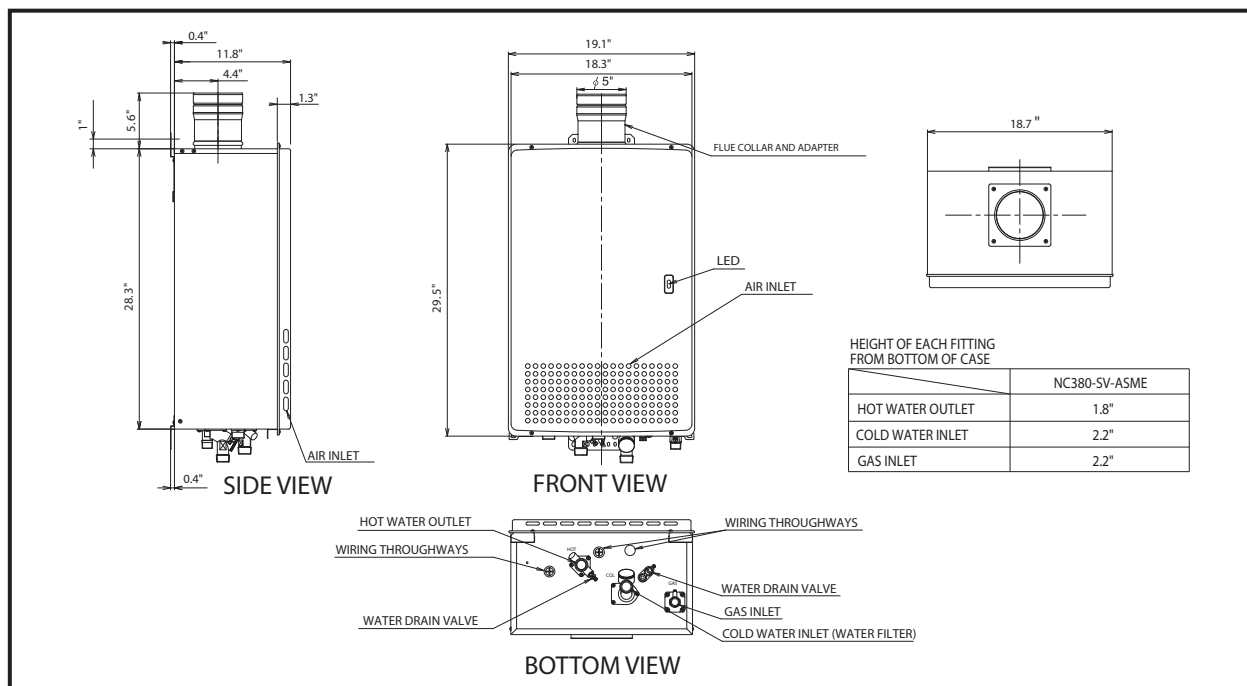
Job Name _____
 Location _____
 Architect/Engineer _____
 Wholesaler _____
 Contractor _____
 Model No. _____
 Gas Type _____
 No. of Units _____ Total BTU/hr Input _____
 Flow Rate (GPH) _____
 Notes _____

- **Standard Input** - gas consumption ranges from 22,500 BTU/h to 380,000 BTU/h
- **Compact Design** - ANSI Z21.10.3/CSA 4.3 certified design that can be wall-mounted indoors or installed outdoors using optional Vent Cap
- **Durable Stainless Steel Casing**
- **Heat Exchanger** - manufactured with commercial grade copper, 25% thicker piping than standard models
- **Venting** - available in standard power vent model that requires 4" Category III stainless steel pipe
- **Direct Electronic Ignition**
- **Multi-System Capability** - units can be linked together by using either the optional 2-unit Quick Connect or multi-unit System Controller for up to 24 units.
- **Fully Modulating** - BTU input can range from 22,500 to 9.1 million BTU/h (for 24-unit Multi-System)
- **Thermal Efficiency** - 80% efficient for use with natural gas and 84% for propane
- **Temperature Controls** - includes remote thermostat that can precisely adjust the output temperature from 100°F to 180°F
- **Safety Devices** - Flame Sensor, Overheat Prevention Device, Lightning Protection Device, Freeze Protection
- **Five Year Limited Heat Exchanger Warranty for Commercial Use**
- **Five Year Limited Parts Warranty**
- **ASME Certified** - all models are certified by ASME and the National Board
- **Approvals** - CSA, UPC, NSF, ASME, Low NOx Approved By SCAQMD (Rule 1146.2)



- Model**
NC380 - SV - ASME
- Accessories**
- Vent Cap (#VC-132)
 - Isolator Valves (#IK-WV-9)
 - Pipe Cover (#PC-4S-SUS)
 - Quick Connect Cord (#QC-1)
- System Controller**
- 6-unit (#SC-201-6M)
 - 12-unit (#SC-201-12M)
 - 24-unit (#SC-201-24M)

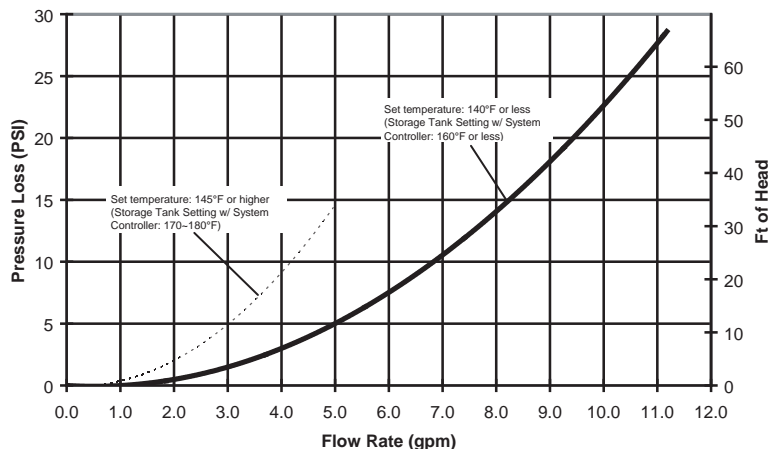
Dimensions



Flow Rates

Temperature Rise (°F)	70	100	
Flow Rate (GPM)	1-unit	8.9	6.2
	2-unit	17.8	12.4
	3-unit	26.7	18.6
	6-unit	53.4	37.2
	9-unit	80.1	55.8
	12-unit	106.8	74.4
24-unit	213.6	148.8	
Flow Rate (GPH)	1-unit	534	372
	2-unit	1068	744
	3-unit	1602	1116
	6-unit	3204	2232
	9-unit	4806	3348
	12-unit	6408	4464
24-unit	12816	8928	

Pressure Loss



NOTE: For Quick-Connect and Multi-System installations, pressure loss remains constant throughout the system regardless of the number of units installed. Multiply the total number of units in the system by the required flow rate from each unit to determine the total pressure loss from the chart above.

Temperature Settings and Options

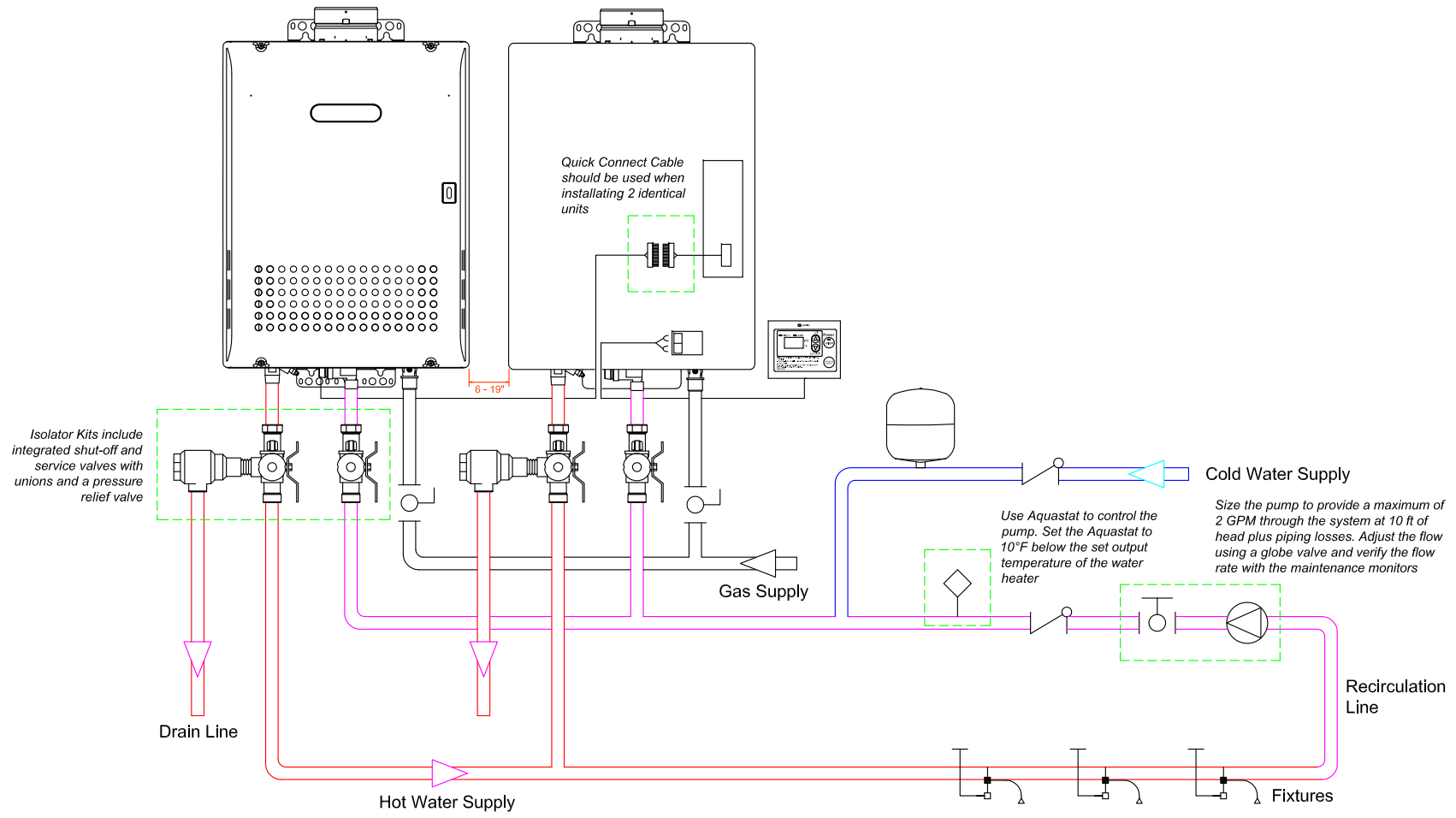
Temperature Settings	100-150°F (In 5°F intervals), 160, 170, *180°F (14 Options)
Default Temperature Options	120, 130, 140, *180°F (Default is 120°F)

*181.4°F actual output temperature

Specification

Commercial, gas-fired, wall-mounted water heater(s) shall be power vent Model NC380 Series as manufactured by Noritz America Corporation. The water heater(s) shall have a 5-year limited Heat Exchanger warranty and a 5-year limited Parts warranty per Noritz Limited Warranty. Unit(s) shall be designed to burn natural/propane gas and certified by CSA International to the latest edition of ANSI standard Z21.10.3/CSA 4.3. Water heater(s) shall have a nominal flow rate capacity of ____ GPH @ 100°F rise with rated input of ____ BTU/hr. Water heater(s) shall be vented with 5" Category III stainless steel vent pipe a distance not to exceed 15 feet (or equivalent) with 3 elbows terminating vertically or horizontally. Water heater(s) is rated for 150 PSI working water pressure and 300 PSI test pressure. Unit(s) shall have a stainless steel case, copper heat exchanger, stainless steel burner, aluminum gas control valves and connections, brass inlet and outlet water connections. Unit(s) shall include features such as an adjustment for high elevation installations, temperature lockout, and 14 temperature options from 100-150°F in 5°F intervals and 160-180°F in 10°F intervals. The heater(s) shall be controlled by an internal circuit board that monitors the inlet and outlet temperatures with installed thermistors, sensing and controlling flow rate to set point temperature with air-fuel ratio controls in order to maintain thermal combustion efficiency. Unit(s) shall include safety features such as flame sensor system, thermal cut-off fuses, wind pressure switch, lightning protection device, overheat prevention device, freeze protection device, and fan rotator detector. Multi-system applications that require 2 units shall be installed by connecting the units using a single cable-only connection (Quick-Connect). Applications that require 3 to 24 units shall use a multi-unit central controller (System Controller). The water heater(s) exceeds the energy efficiency requirements of ASHRAE 90.1b-1992 and listed by SCAQMD rule 1146.2 Low NOx.

Noritz America reserves the right to discontinue, or change at any time, the designs and/or specifications of its products without notice.



NORITZ
 11160 Grace Avenue
 Fountain Valley, California 92708
 866-7NORITZ (866-766-7489)
 www.noritz.com

MODEL	EQUIPMENT LIST		
APPLICATION	Item	Part Number	Qty
Commercial Recirculation 2-Unit Quick Connect	Noritz SV Model Tankless Water Heater	NC-___-SV(-ASME)	2
	Remote Controller	RC-7649M	1
	Remote Controller Cord	RC-CORD10	1
	Quick Connect Cord	QC-1	1
	Isolator Kit	IK-WV-___	2
	Vent Cap (Outdoor Use Only)	VC-___	2
	Pipe Cover	PC-__S	2
	Expansion Tank	Field Supplied	1
	Pump	Field Supplied	1
	Aquastat	Field Supplied	1
Globe Valve	Field Supplied	1	
Check Valve	Field Supplied	2	

Note: This diagram is for reference only. Installation must comply with State and Local Code, all gas and water pipe must be sized correctly to specific length, according to accepted engineering methods or the UPC Code for Noritz Water Heaters to operate correctly.

	Shut-off Ball Valve		Aquastat (Honeywell Model #L6006A or L6006C)
	Check Valve		Pump
	Union		Mixing Valve
	Pressure Relief Valve (Watts 174A, Zurn P3000BR, Cash Acme F-82)		Thermal Expansion Tank